

# IMMUNO-ONCOLOGIE

## EXEMPLE DES CAR-T

MAGGIE MCLAUCHLAN

INFIRMIERE COORDINATRICE CAR-T

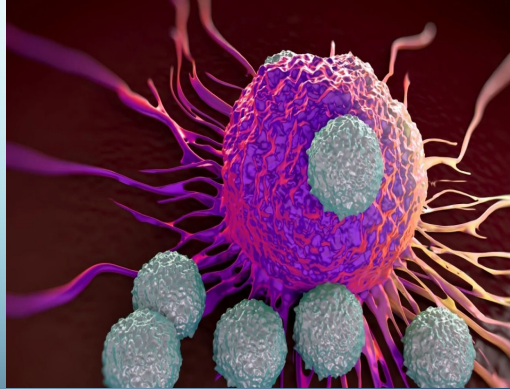
UNITÉ DE THÉRAPIES INNOVANTES

## CHIMERIC ANTIGEN RECEPTOR – T CELLS

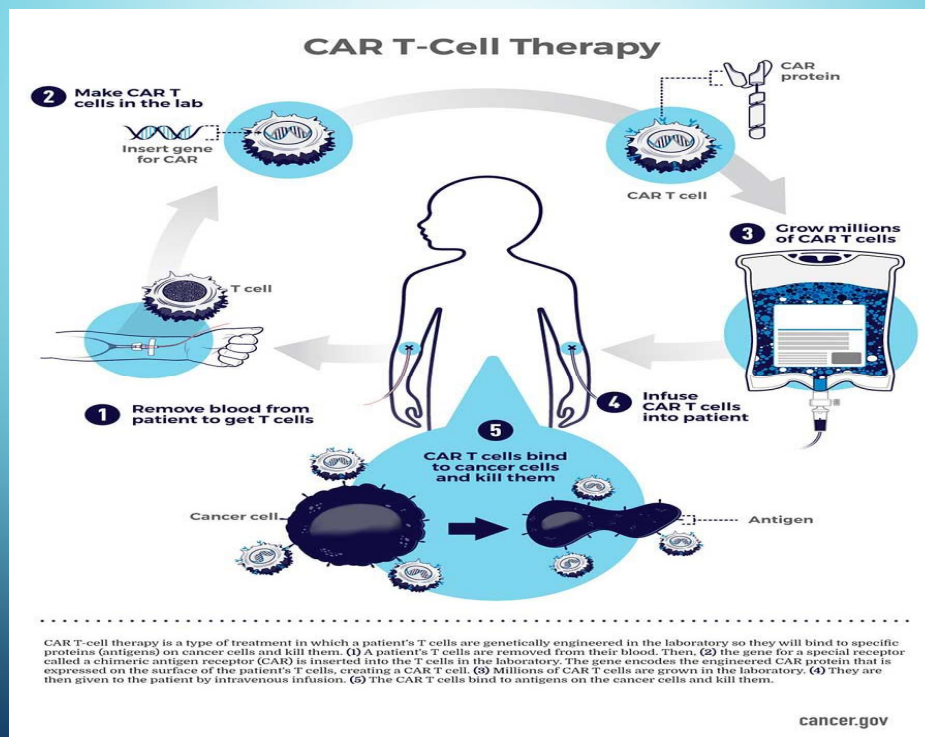
- Traitement commercial
- CAR-T constituent une forme d'immunothérapie
- Elle repose sur la modification génétique des propres **lymphocytes T** d'un patient afin que ceux-ci soient en mesure de reconnaître et détruire les cellules cancéreuses
- Consentements
- Suivre un processus de qualité rigoureux et protocole de surveillance qui mesure/monitore les effets secondaires

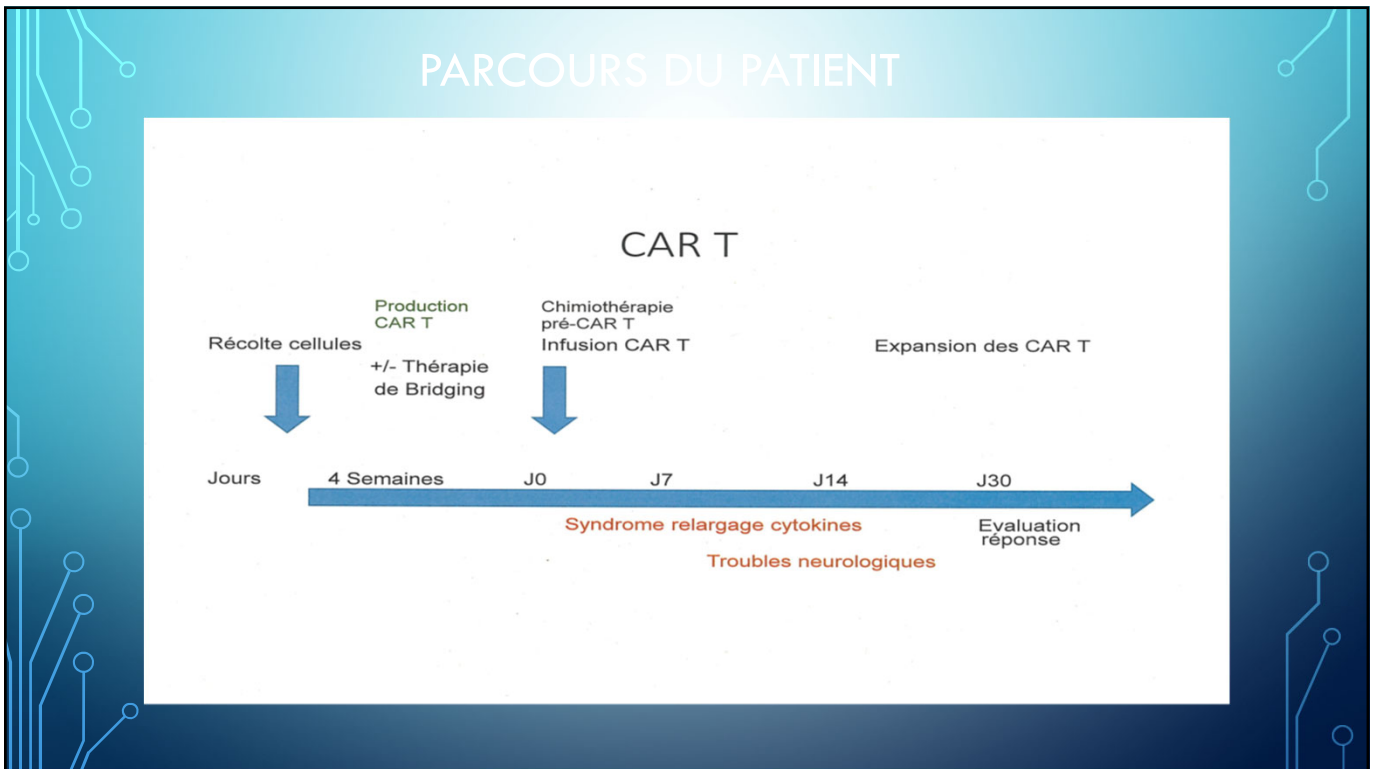
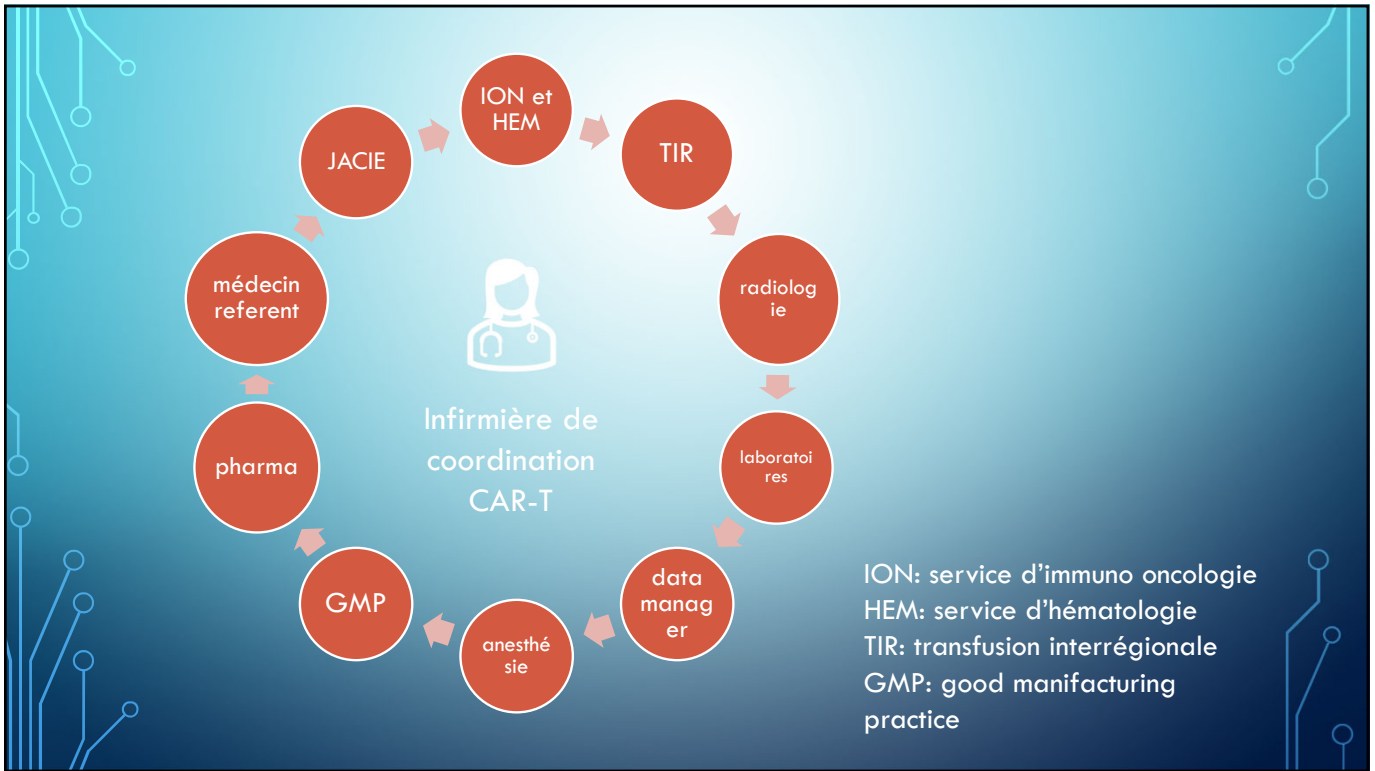
# JACIE - JOINT ACCREDITATION COMMITTEE ISCT & EBMT

'Quality Management and Accreditation in Hematopoietic Stem Cell Transplantation and Cellular Therapy' (The EBMT/EHA CAR-T Cell Handbook 2024)



This Photo by Unknown Author is licensed under [CC BY-SA-NC](https://creativecommons.org/licenses/by-sa/4.0/)



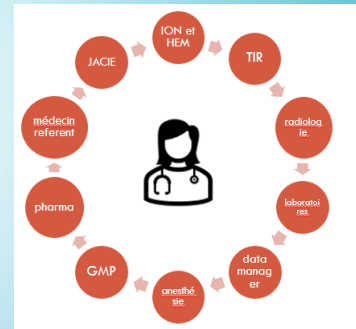


## EFFETS SECONDAIRES SPÉCIFIQUE AUX CAR-T

- Cytokine Release Syndrome (CRS)
- Immune effector Cells Associated Neurotoxicity Syndrome (ICANS)

## SUIVI

- Examen clinique
- Radio-diagnostic images
- Contrôle biologique



J30

J100

J180

annuel

